

INDUSTRIAL AIR-COOLED CHILLER

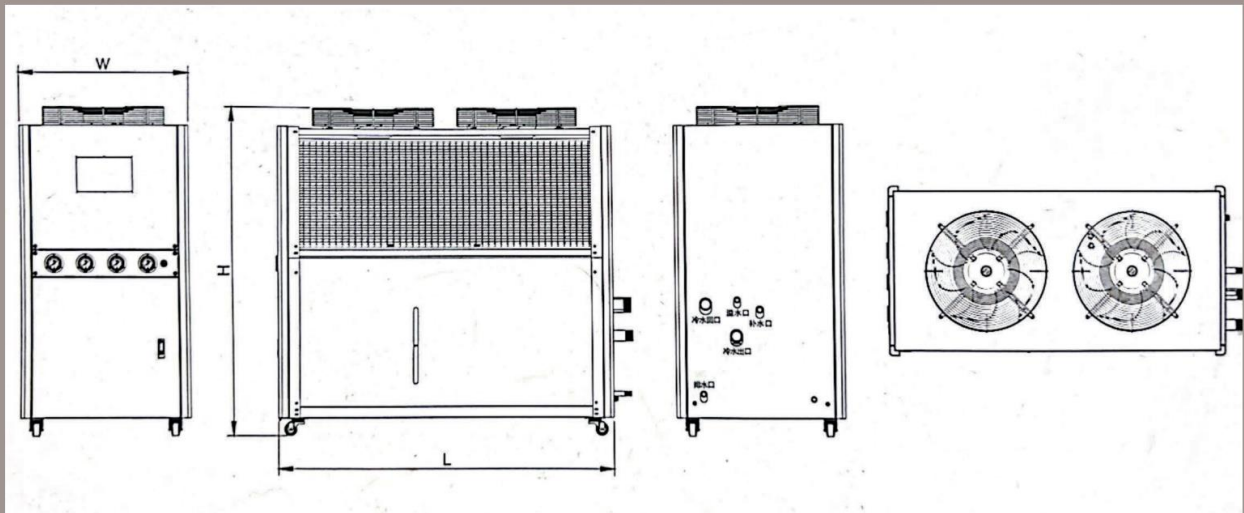
风冷式工业冷水机



FEATURES

- The water chiller is to provide cooling process to plastic moulds to improve molded products quality and reduce down injection cycle time
- Installed with import compressors, highly efficient shell condenser and evaporator, excellent colling, quiet and low electricity consumption
- Cooling temperature range : 5°C ~ 30°C
- To employ microcomputer with easy operation which can control temperature within $\pm 3^{\circ}\text{C}$ to $\pm 5^{\circ}\text{C}$ precisely
- Stainless steel heat preservation water tank and anti-icing protection device
- Industrially designed, elegant and ergonomic

STRUCTURE DIAGRAM



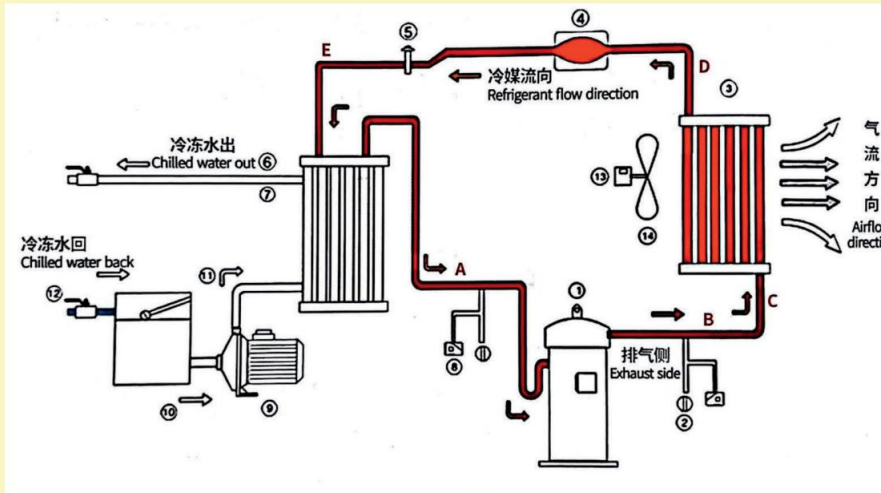
SPECIFICATIONS & PARAMETERS



MODEL	YM-005-AC	YM-010-AC	YM-015-AC	YM-020-AC	YM-030-AC	YM-040-AC	YM-050-AC
COOLING CAPACITY (W)	14600	29900	43800	59800	89800	119600	149500
NUMBER OF COMPRESSOR	1	2	3	2	3	4	5
COMPRESSOR TOTAL POWER (HP)	5	10	15	20	30	40	50
REFRIGERANT	R-22	R-22	R-22	R-22	R-22	R-22	R-22
CONDENSER TYPE	Tube-fin Style	Tube-fin Style	Tube-fin Style	Tube-fin Style	Tube-fin Style	Tube-fin Style	Tube-fin Style
NUMBER OF BLOWER	2	2	2	2	2	2	2
PER FAN CAPACITY (KW)	0.15	0.45	0.45	0.55	0.75	0.75	1.0
NUMBER OF COOLING WATER INLET/OUTLET (GROUP)	4	1	1	1	1	1	1
WATER TANK CAPACITY (L)	60	160	200	350	450	450	450
PUMP POWER (HP)	1	2	2	3	5	5	5
PUMP FLOW (L/MIN)	100	200	200	300	350	350	350
POWER SUPPLY	AC 415v, 3p, 50Hz	AC 415v, 3p, 50Hz	AC 415v, 3p, 50Hz	AC 415v, 3p, 50Hz	AC 415v, 3p, 50Hz	AC 415v, 3p, 50Hz	AC 415v, 3p, 50Hz
WIRE LENGTH (M)	5	5	5	Option	Option	Option	Option
DIMENSION (L x W x H)	1280mm x 700mm x 1000mm	1680mm x 850mm x 1470mm	1900mm x 1000mm x 1900mm	2150mm x 850mm x 1970mm	2150mm x 900mm x 2000mm	2600mm x 900mm x 2000mm	2600mm x 1100mm x 2000mm
WEIGHT (KG)	200	365	550	665	1100	1500	2000

We reserve right to change specifications without prior notice 产品规格若有变更, 恕不另行通知

WORKING PRINCIPLE OF AIR-COOLED MODELS



Symbol 符号	Name 名称
1	Compressor 压缩机
2	High Voltage Controller 高压控制器
3	Condenser 冷凝器
4	Dry Filter 干燥过滤器
5	Expansion Valve 膨胀阀
6	Anti-freeze Switch 防冻开关
7	Evaporator 蒸发器
8	Low Voltage controller 低压控制器
9	Water Pump 水泵
10	Water Tank 水箱
11	Ball Float Switch 浮球开关
12	Ball Float Valve 球心阀
13	Motor 电机
14	Fan 风扇

OTHER PARTS & ACCESSORIES



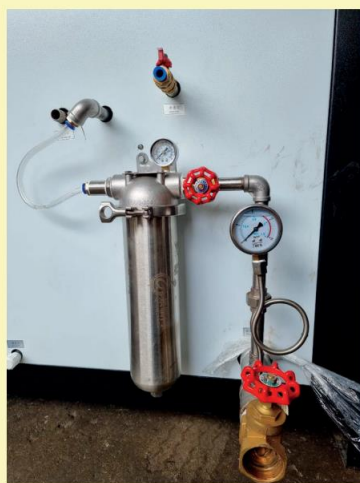
IMPORTED COPPER PIPE



TITANIUM TWISTED PIPE



MICRO COMPUTER CONTROL SYSTEM



STAINLESS STEEL SUS-304 HOUSING WATER PURIFIER



VERTICAL CENTRIFUGAL PUMP



HIGH PRESSURE MULTISTAGE PUMP